



SPECIFICATIONS

Push Button Shower Panel ASME/CSA 102mm (Fixed Time)

Concealed self-closing mixer

GENERAL INFORMATION

Valve Type: Self Closing Metering Valve
Valve Activation: Manual Push Button Valve
Installation Type: Concealed Wall Mount
Body Material: Lead Free Solid Brass
Finish Type: Chrome Plated Finish

CONNECTIONS & DIMENSIONS

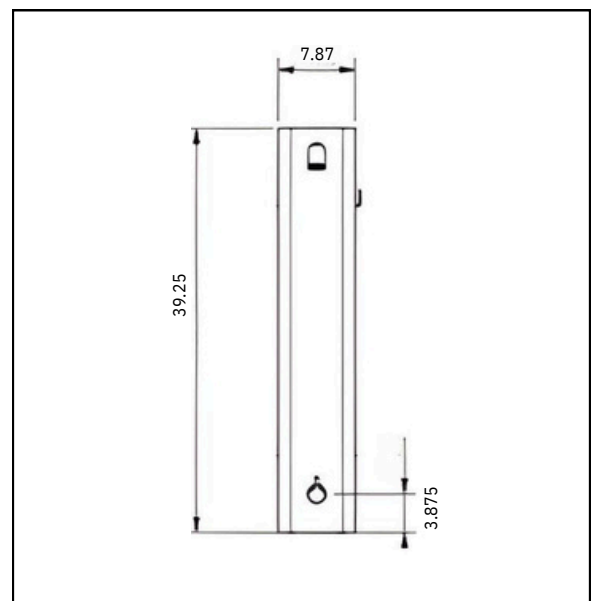
Connection Inlet: 3/4" FPT (1/2" MPT Adapters included)
Connection Outlet: 3/4" MPT (1/2" MPT Adapters included)
Panel Width: 5.3" (135mm)
Panel Height: 41.3" (1050mm)

PRODUCT FEATURES

Time Adjustable: No, 30 Seconds
Temperature Adjustable: No
Working Temperature Range: 40 Degrees F - 170 Degrees F
Built-in Premix: No
Lead Free and Corrosion Resistant
Vandal Resistant: reduces tampering and risk of flooding
Water Saving Up To 85%!

WHAT'S INCLUDED

Push Button Shower Valve
Shower Panel
Shower Head
Long Braided Supply Line (36 in)
Phillips Pan Head Screws With Plastic Anchors (1 1/2 in)
Adapters With Washers (3/4" FPT x 1/2" MPT)
Filter Screen (3/4 in)



40-170 °F



3/4" FPT



0.5-6 bar
2-4 bar (Recommended)



ADA Compliant
CSA B125.1
ASME A112.18.1



15 l/min (3 bar)



King Supply Co.

1-866-352-6652

SH-LIG-RES-ADJ

SPECIFICATIONS

Ligature Resistant Shower Head (Adjustable)
Anti ligature shower head with adjustable jet

GENERAL INFORMATION

Shower Head Type: Adjustable Jet
Body Material: Lead Free Solid Brass
Finish Type: Chrome Plated Finish

CONNECTIONS & DIMENSIONS

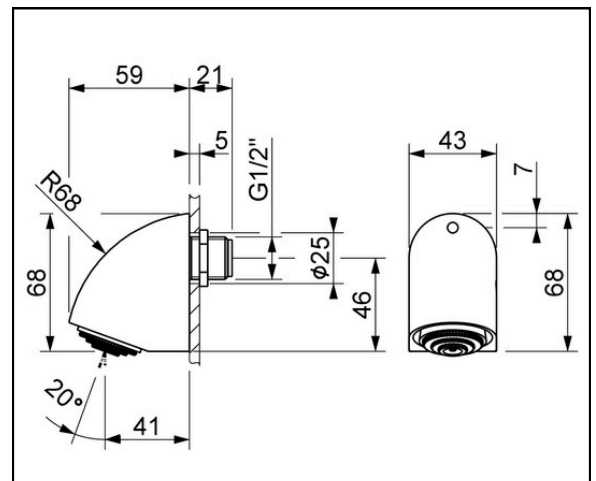
Connection Inlet: 1/2" MPT
Length: 3.14" (80mm)
Width: 1.7" (43mm)
Height: 2.7" (68mm)

PRODUCT FEATURES

Working Temperature Range: 40 Degrees F - 160 Degrees F
Lead Free and Corrosion Resistant
Ligature Resistant, Anti-Suicide
No Wall Mounting Screws Necessary
Adjustable Jet: Yes, 10 - 30 Degrees

WHAT'S INCLUDED

Shower Head



40-160 °F



0.5-6 bar



33 l/min (3 bar)



1/2" MPT




EN 12540, EN 1982,
EN 12164, EN 12165,
ISO 9227
ADA COMPLIANT



15 Year Warranty

KING SUPPLY COMPANY
16 WHITINS RD
SUTTON, MA 01590
1 (866) 352-6652
INFO@KINGSUPPLY.COM

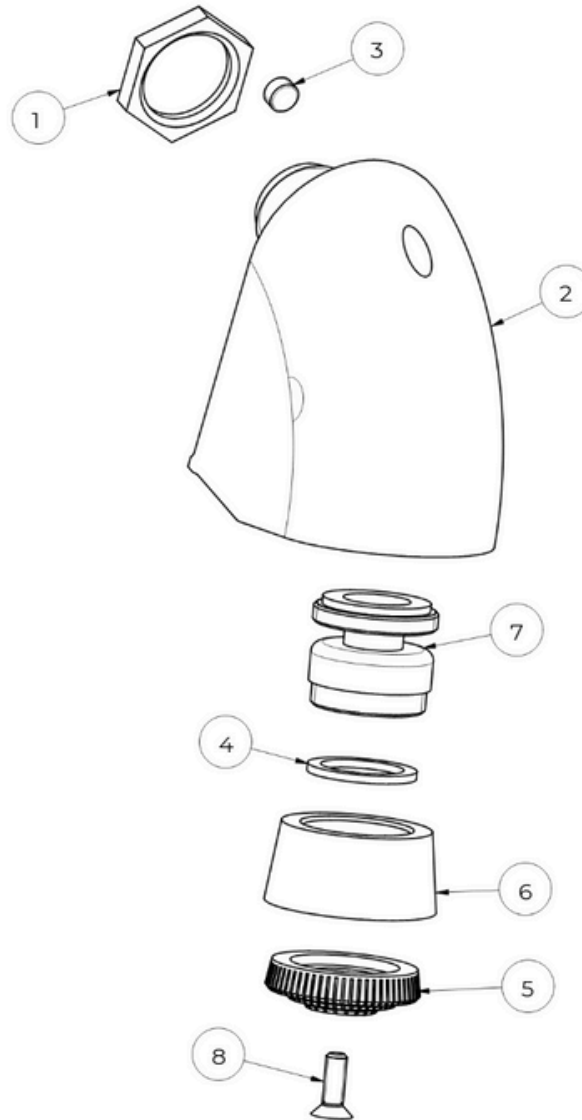
SH-LIG-RES-ADJ

 100% Made in Italy



DIAGRAM

Ligature Resistant Shower Head (Adjustable)
Anti ligature shower head with adjustable jet



Position	Description
1	Nut 1/2
2	Shower Head Body
3	Inox Grab Screw A2 M6x5 UNI 5927
4	Black Rubber Gasket 21x16x1.5
5	Flow Strainer
6	Housing for Aeration
7	Chromed Snode M24x M22x1
8	Inox Screw A2 M4x12 UNI5933



SPECIFICATIONS

Push Button Presto Shower Valve 102mm (Fixed Time&Temp)

Concealed self-closing tap

GENERAL INFORMATION

Valve Type: Self Closing Metering Valve
Valve Activation: Manual Push Button Valve
Installation Type: Concealed Wall Mount
Body Material: Lead Free Solid Brass
Finish Type: Chrome Plated Finish

CONNECTIONS & DIMENSIONS

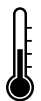
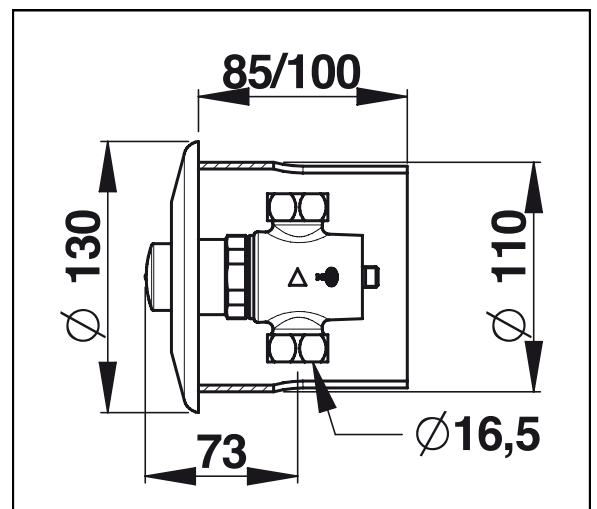
Connection Inlet: 3/4" MPT (3/4" MPT Adapters included)
Connection Outlet: 3/4" MPT (3/4" MPT Adapters included)
Escutcheon Plate Diameter: 5.1" (130mm)
Valve Body Length: 4" (102mm)

PRODUCT FEATURES

Time Adjustable: No, 30 Seconds
Temperature Adjustable: No
Working Temperature Range: 40 Degrees F - 170 Degrees F
Built-in Premix: No
Lead Free and Corrosion Resistant
Vandal Resistant: reduces tampering and risk of flooding
Water Saving Up To 85%!

WHAT'S INCLUDED

Push Button Shower Valve
Rosette Plate (5 in Diameter)
Rough-In
Filter Screen (3/4 in)
Paper Washer (3/4 in)
Adapters With Washers (3/4 in FPT x 3/4 in MPT)



40-170 °F



1-5.5 bar



10 l/min (3 bar)



3/4" MPT



EN 12540, EN 1982,
EN 12164, EN 12165,
ISO 9227
ADA COMPLIANT
ASME A112.18.1
CSA B125.1



15 Year Warranty